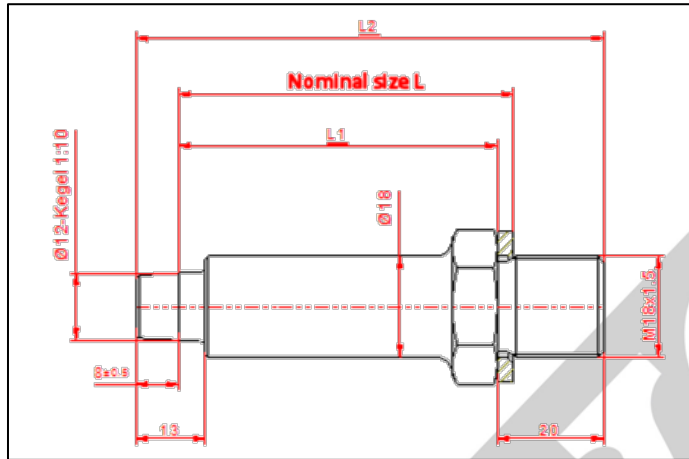


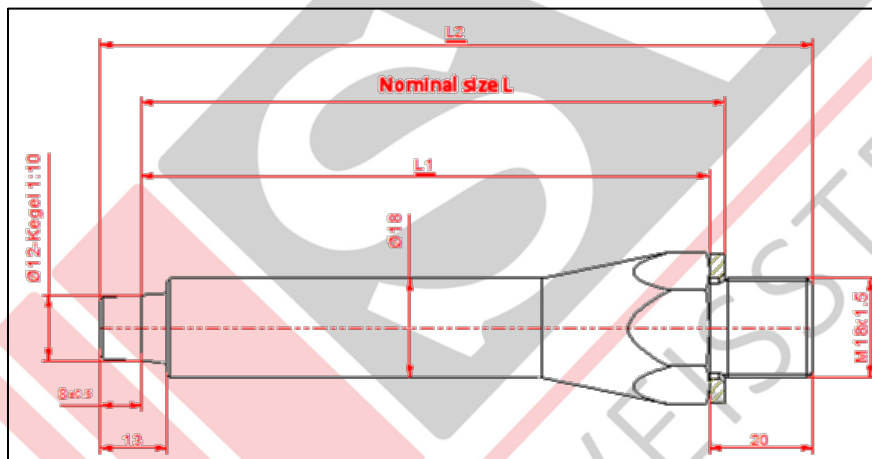
### Threaded shanks M18x1.5

For Caps  $\varnothing$ 16mm 48-108mm length



Version	Nominal size L	L1	Overall length L2
2	23	20	48
3	33	30	58
4	43	40	68
5	53	50	78
6	63	60	88
7	73	70	98
8	83	80	108

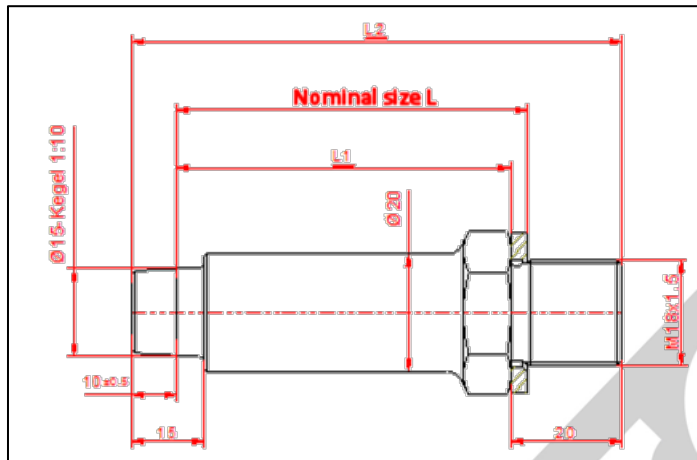
for caps  $\varnothing$ 16mm 118-178mm length



Version	Nominal size L	L1	overall length L2
2	93	90	118
3	103	100	128
4	113	110	138
5	123	120	148
6	133	130	158
7	143	140	168
8	153	150	178

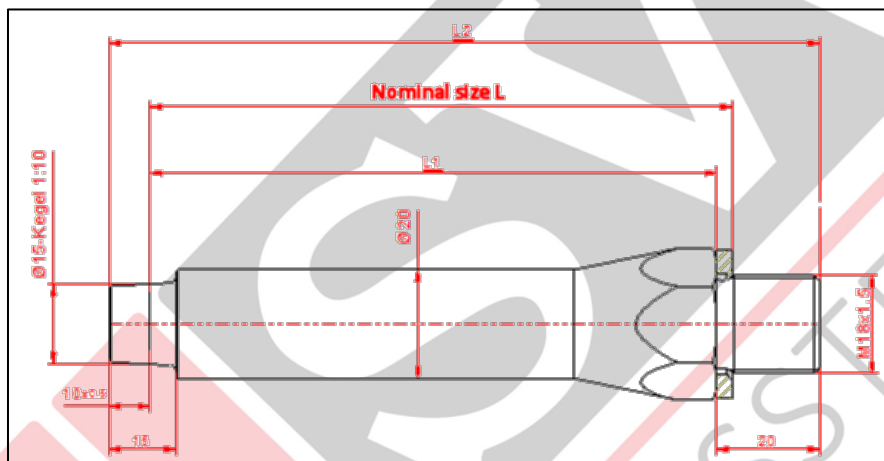
### Threaded shanks M18x1.5

For caps  $\varnothing 20\text{mm}$  50-110mm length



Version	Nominal size L	L1	overall length L2
2	23	20	50
3	33	30	60
4	43	40	70
5	53	50	80
6	63	80	90
7	73	70	100
8	83	80	110

for caps  $\varnothing 20\text{mm}$  120-180mm length



Version	Nominal size L	L1	overall length L2
2	93	90	120
3	103	100	130
4	113	110	140
5	123	120	150
6	133	130	160
7	143	140	170
8	153	150	180