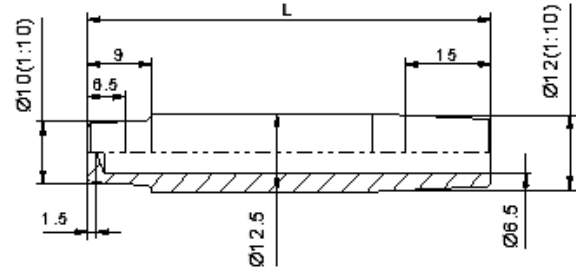


STRAIGHT ELECTRODE SHANKS

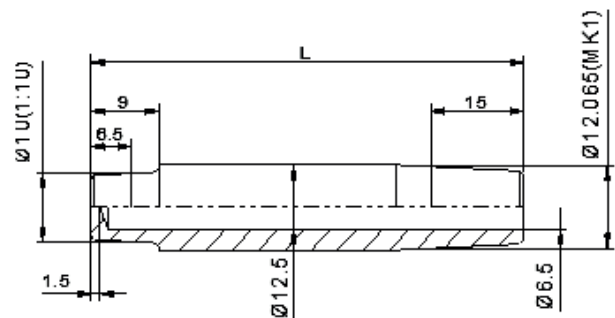
For $\varnothing 13\text{mm}$ caps
Taper 1:10 $\varnothing 12$

Art.-Nr.	Overall length L
KH10	33,5
KH12	53,5
KH14	73,5
KH16	93,5



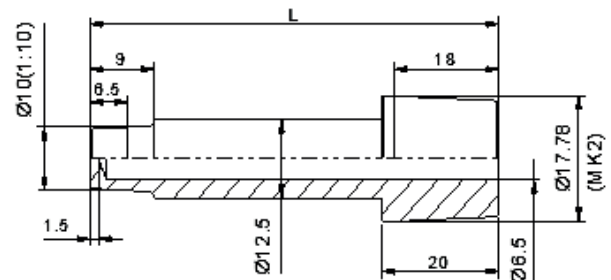
For $\varnothing 13\text{mm}$ caps
Taper MK1 $\varnothing 12,065$

Art.-Nr.	Overall length L
KH30	33,5
KH32	53,5
KH34	73,5



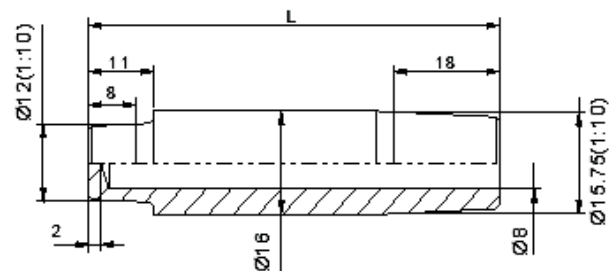
For $\varnothing 13\text{mm}$ caps
Taper MK2 $\varnothing 17,78$

Art.-Nr.	Overall length L
KH50	33,5
KH52	53,5
KH54	73,5
KH56	93,5
KH57	103,5



For $\varnothing 16\text{mm}$ caps
Taper 1:10 $\varnothing 15,75$

Art.-Nr.	Overall length L
KH110	36
KH112	56
KH114	76



For $\varnothing 16\text{mm}$ caps
Taper MK2 $\varnothing 17,78$

Art.-Nr.	Overall length L
KH150	36
KH152	56
KH154	76

